

Genuine Accessories



Vehicle Model: **Tucson**

Model Year 2016 ~

Part No. D3021 ADU02 (Standard Roof)

D3121 ADU01 (Panoramic Roof)

Language English

Rev. Date 8/22/2018

Accessory: **Crossbar Set**

Difficulty (A)

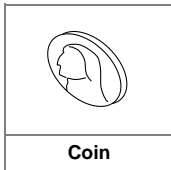
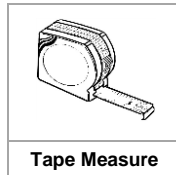
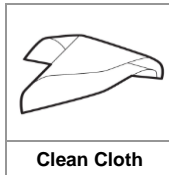
Note: Difficulty stated above reflects the minimum level of expertise required to install the accessory.
(A) Customer (B) Dealer Technician (C) Master Technician

WARNING: Do NOT install Standard Roof Crossbar Set on a Panoramic Roof vehicle.
* For Standard Roof models use Part No. D3021 ADU02:
Do not exceed manufacturer's roof load limit of 220 lbs / 100 Kg
* For Panoramic Roof models use Part No. D3121 ADU01:
Do not exceed manufacturer's roof load limit of 220 lbs / 100 Kg

Instructional Symbols / Definitions

	Denotes warnings that may lead to serious physical injury or vehicle damage.		Denotes quality processes to be checked prior to moving to the next step.	Denotes safety equipment required to be used such as a mask, safety glasses, gloves, and hearing protection.	
	Denotes cautions to be taken to avoid physical injury or electronic component damage.		Denotes specific tools that are necessary to complete the step.		
	Denotes cautions to be taken to avoid vehicle and component damage.		Denotes instructional steps necessary to complete the process.		

Basic Required Hand Tools



Specialty Required Tools

Wrench (Included)

FMVSS110 Compliance Information

All dealers must determine if the weight they have added in the form of all options or accessories, when added to the weight of all Port/Dealer Installed options or accessories, exceeds the lesser of 1.5% of GVWR or 100 lbs. If the additional weight does exceed the lesser of the indicated thresholds, a "Load Carrying Capacity Reduced" label must be installed. A black, fine-point, indelible marker must be used to write by hand onto the label, the reduced carrying capacity in kilograms or pounds, which is the total weight of all added options and accessories.

Load Label Part Number: NP070 - 09003

Part Number:
D3021 ADU02
5.73 lbs
2.60 kg
(Gross Weight)

Part Number:
D3121 ADU01
6.17 lbs
2.80 kg
(Gross Weight)

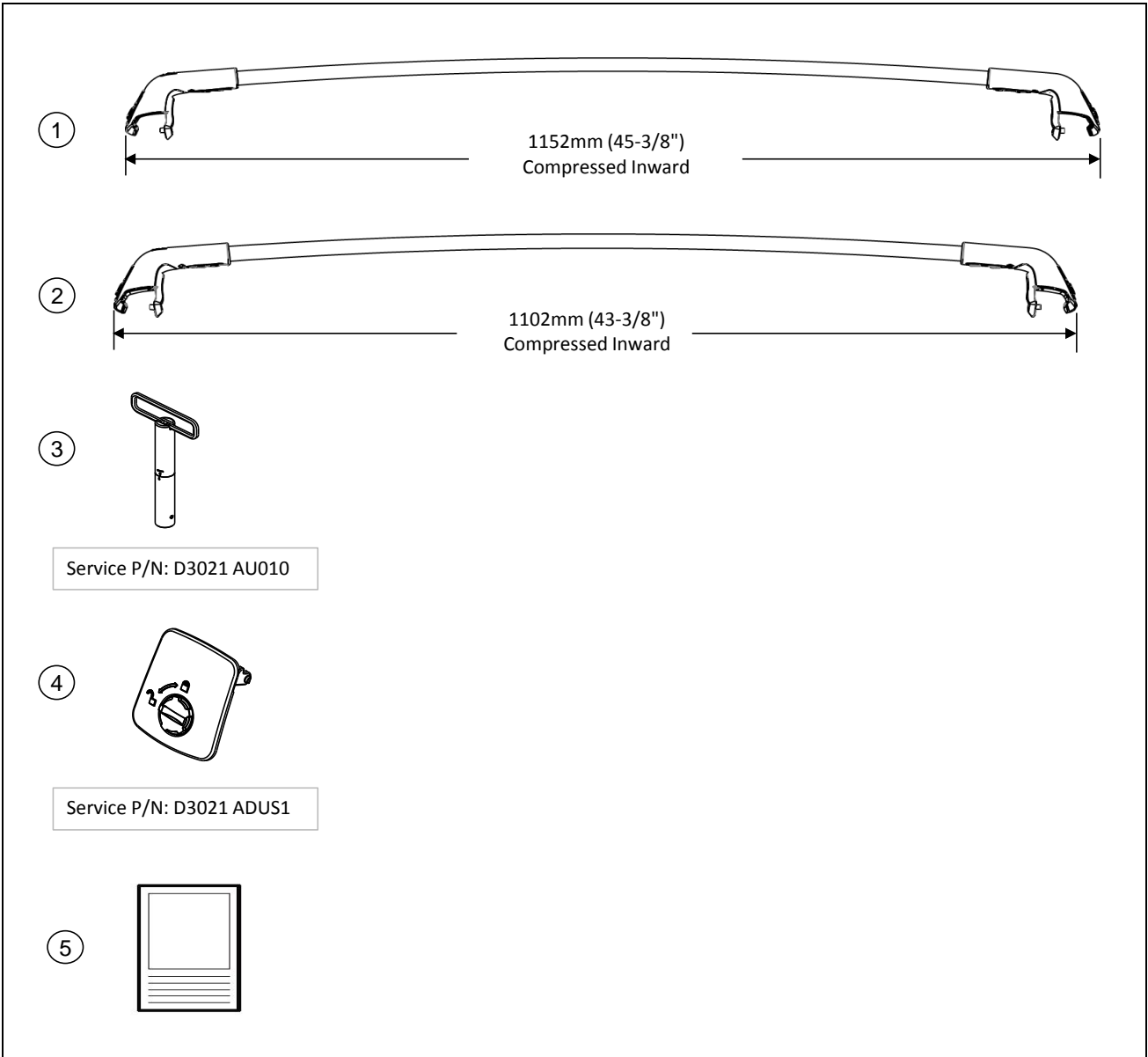
	REGULARLY CHECK THE TIGHTNESS BY PERFORMING A TUG ON THE CROSSBARS. THEY SHOULD NOT MOVE. If crossbars move, see step 5 for proper tightening. Incorrect clamp tightness can cause crossbar separation from vehicle resulting in product failure and vehicle damage. Serious physical injury may occur.
	Loads must be evenly distributed and secured.
	Any weight carried on the vehicle will adversely affect its handling particularly in cornering or in a cross wind and the vehicle should therefore be driven with increased caution.
	Only use NON-STRETCH tie down straps. Use of stretch elastic tie downs may cause loss of load, potential serious injury, and vehicle damage.

Notes to the Installer:

- 1) Read the entire installation instructions prior to beginning the installation of this accessory.
- 2) Make sure the vehicle is completely clean before the accessory is installed.
- 3) Ensure the vehicle is properly protected in the area(s) that the accessory is to be installed.
- 4) To prevent vehicle damage, never place tools on top of painted surfaces, seats, dash pad, console or floor carpet/mats.
- 5) Always wear appropriate safety gear including gloves and safety glasses when required.
- 6) Confirm correct Crossbar Kit P/N with vehicle roof type application before installing.

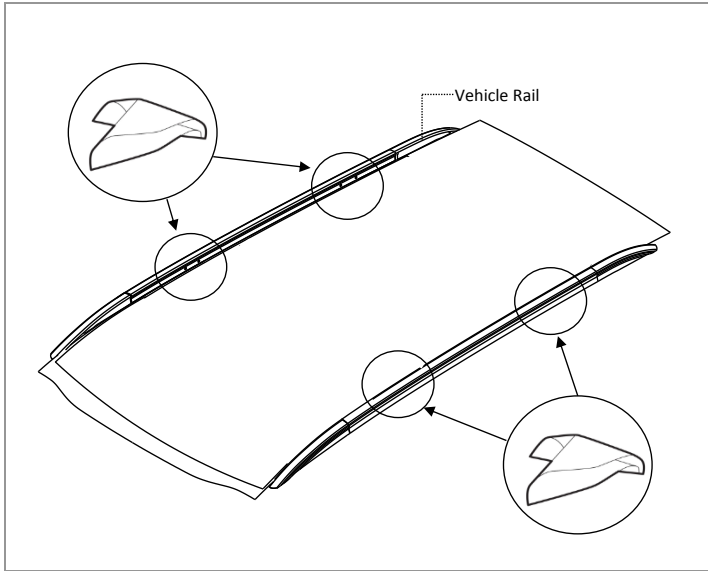
Genuine Accessories

Kit Overview

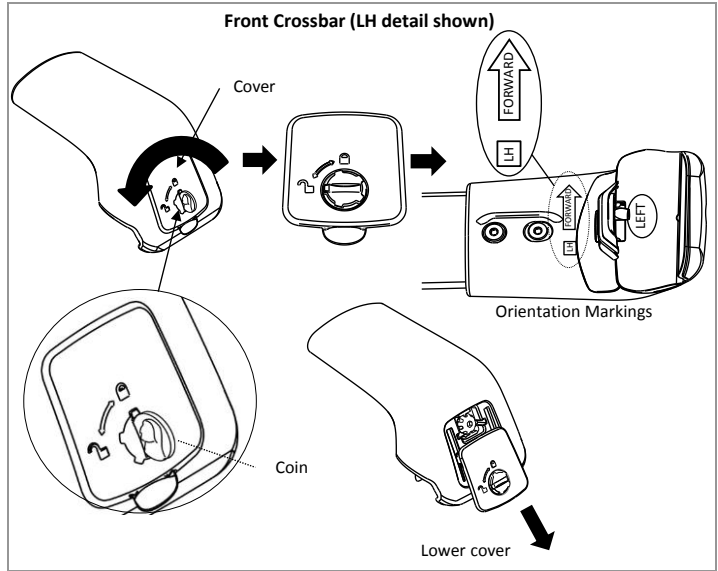


No.	Qty.	Description
1	1	Front Crossbar (longer)
2	1	Rear Crossbar (shorter)
3	1	Wrench
4	4	Lock Cover (pre-installed on crossbars)
5	1	Quick Reference Guide

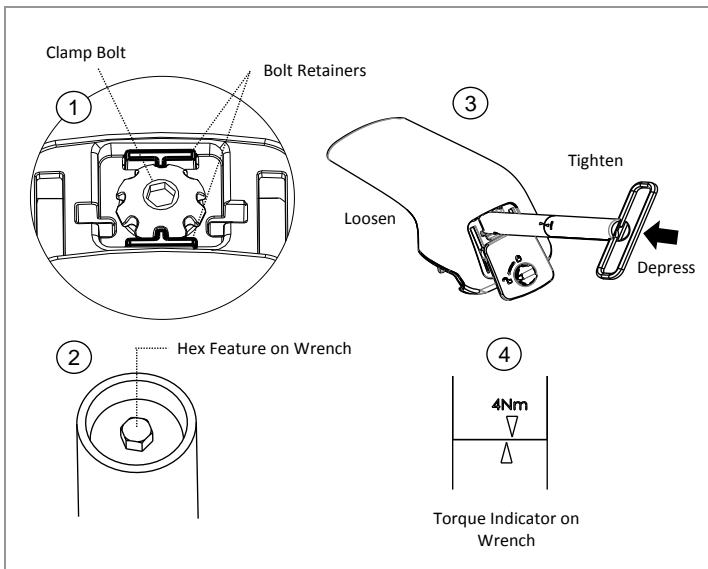
Genuine Accessories



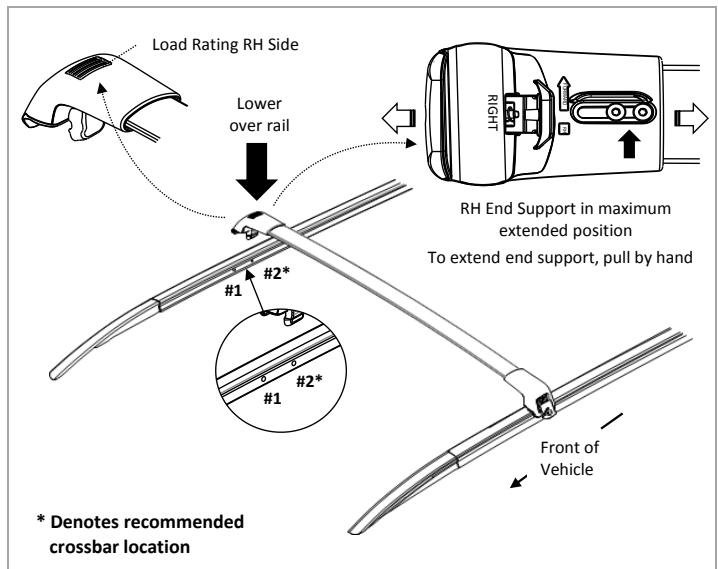
	Step Ladder and Clean Cloth	1
NOTE	<p>A. Clean the vehicle rails. B. Verify the mounting holes are free of debris and/or obstructions.</p>	



	Coin	2
NOTE	<p>A. Identify the front crossbar (longer bar). B. Using a coin, turn each lock 90° counterclockwise to unlock covers. C. Carefully pull the bottom of each locking cover, then slide the covers downward as shown. NOTE: The Left and Right orientation markings on the front crossbar before installing on the vehicle.</p>	
	<p>CAUTION: Forcing the locking cover in or out of position may cause damage to locking components. Ensure the lock is in proper position before opening or closing the locking cover.</p>	

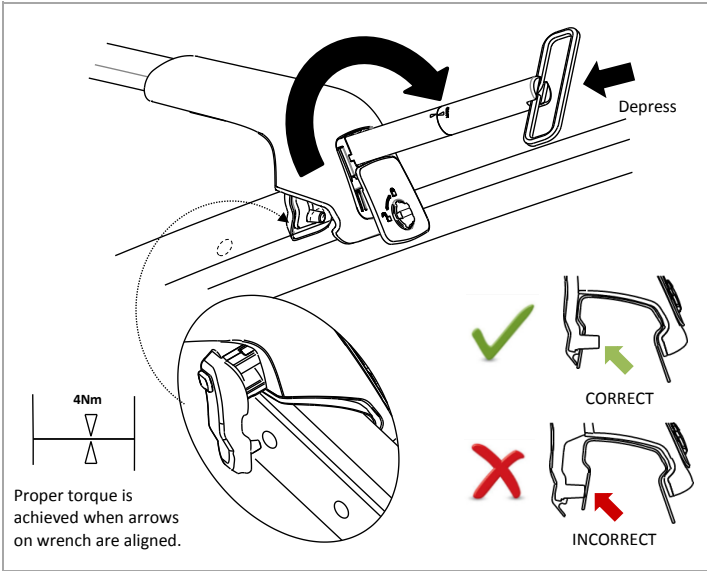


	Wrench	3
NOTE	<p>A. To tighten or loosen the clamp bolt; place the supplied Wrench over the head of the clamp bolt and align the hex feature. The Wrench will depress the bolt retainers allowing the clamp bolt to turn freely. When tightening; the torque indicator arrows will align when the proper torque value is achieved. NOTE: Ensure the Wrench is parallel to bolt when tightening or loosening clamp bolt. Tip: Hold Wrench shaft with one hand while pushing the Wrench inward and turning with other hand.</p>	
	<p>CAUTION: Misaligned Wrench can cause bolt retainer to not disengage which can result in damage to the Wrench or assembly mount.</p>	



	Step Ladder and Wrench	4
NOTE	<p>A. Position LH side of front crossbar (longer bar) over the LH side of the vehicle side rail. Line up LH crossbar clamp pin with the #2* hole position in the vehicle side rail. B. Once aligned, slide end support on the RH side to its maximum extended position. Lower the RH side of the front crossbar over the RH side of the vehicle side rail and slide the RH end support inward. Line up the RH crossbar lower clamp pin with the #2 hole position in the vehicle side rail.</p>	
	<p>Load ratings are shown on the RH side clamp. Ensure the rating is on the RH side of the vehicle, or the crossbar is incorrectly installed.</p>	

Genuine Accessories



Step Ladder and Wrench 5

NOTE

A. Align the clamp pin with the mounting hole, then press and hold clamp into position (with the clamp pin in the mounting hole), in order to allow for the clamp bolt to engage when tightening.

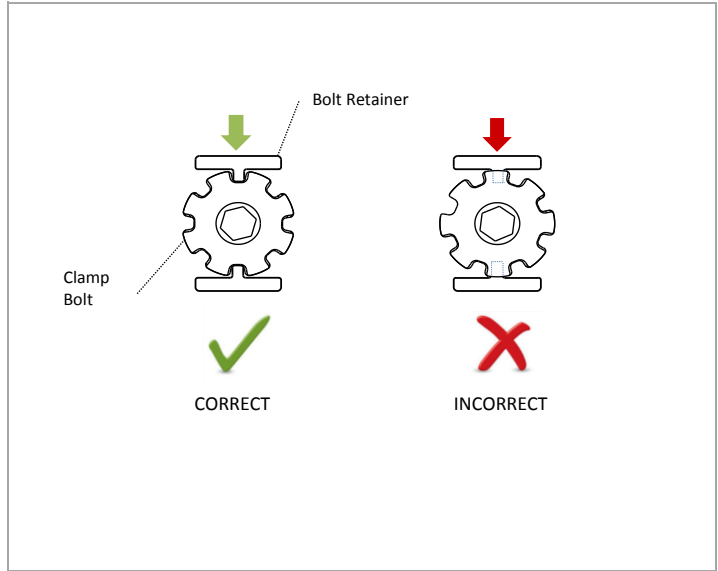
B. Tighten the clamp pin by turning the clamping bolt clockwise - tighten the bolt until proper 4Nm torque value is achieved with the provided Wrench.

C. Repeat for opposite end of crossbar.

- Use only the provided Wrench for the clamping bolt. Any other wrench may cause damage to the product.

NOTE: DO NOT over / under tighten.

WARNING: Misaligned pin can cause clamp to break and can cause crossbar separation from the vehicle resulting in product failure and vehicle damage.



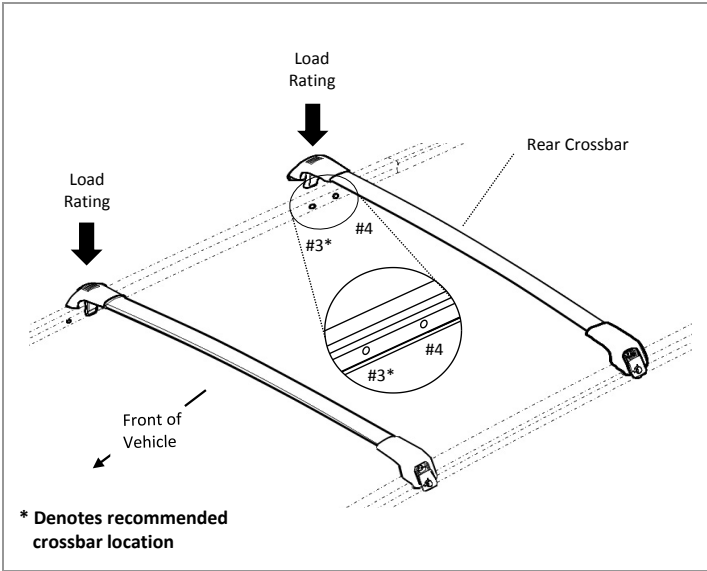
Step Ladder and Wrench 6

NOTE

A. Check clamp bolts to ensure they are in locked position.

- The clamp bolt is in locked position when the notches in bolt are engaged with bolt retainer.

- Use only provided Wrench for the clamping bolt.

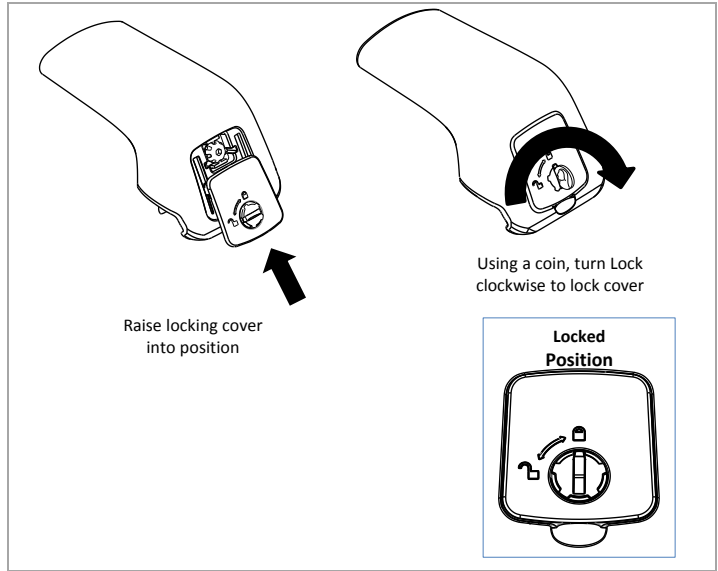


Step Ladder and Wrench 7

NOTE

A. Repeat steps 2 - 6 for the rear crossbar in the #3* hole position in the vehicle side rail.

Load Rating Information is shown on the RH side clamp. Ensure the Load Rating Information is displayed on the RH side of the vehicle.



Step Ladder and Coin 8

NOTE

A. Verify the front and rear crossbars are secure and clamp pins align with the corresponding mounting holes.

B. Reinstall the locking covers.

C. Using a coin, lock the covers as shown.

- Turn the lock clockwise 90° to the locked position.

- Make sure that the lock has stopped in its 90° position and that the cover is secure.

Genuine Accessories



Quick Reference
Guide



Wrench








9

**N
O
T
E**

- A. Fold the Quick Reference Guide in half.
- B. Place the Quick Reference Guide and Wrench inside the vehicle's Glove Box.

Genuine Accessories Visual Check

	Items To Be Checked	Results Of The Check
	With locking covers closed and clamp pins secure, ensure the crossbars are in a locked position by attempting to move the crossbars forward and rearward.	Crossbars do not move and are tight.
	Locking covers are locked and cannot be removed.	The locking covers should not move when in the locked position.
	Verify correct orientation of crossbar.	Crossbars correctly orientated.
	Verify the rubber gaskets are seated without folds or tucks.	Gaskets seated correctly.
	Load rating markings are on RH side clamps.	Crossbar is correctly installed.